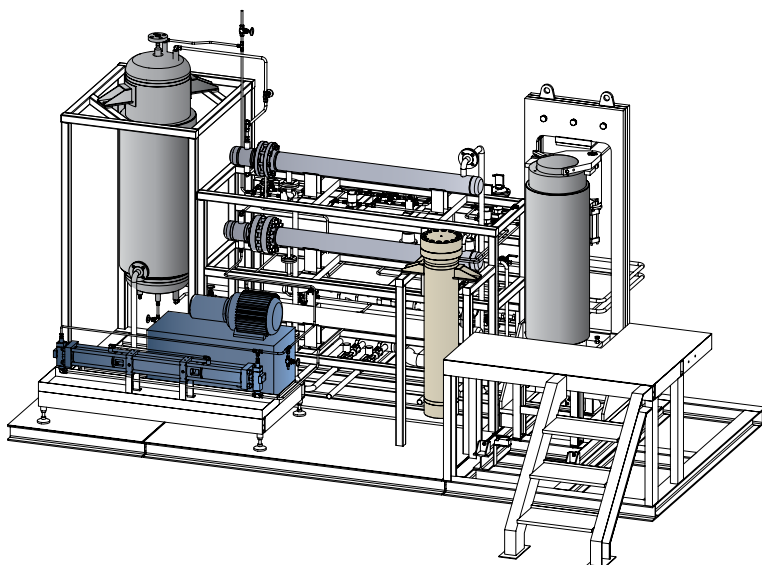




構造図



- Year/Month : 2009/04
- Client/Owner : FINETEC
- Engineer : ILSHINAUTOCLAVE
- Location : ANSEONG. REPUBLIC OF KOREA

TITLE

Supercritical CO₂ Dry System
 – Aerogel Dry Process (エーロゲル建造の工程)

PROCESS

Removal Condition	330kg/cm ² at 100°C
Total Output	50ℓ / day
Production Time	4hr/day x 1set

MAJOR APPLIANCES

Extractor	50ℓ x 1 unit
Max. Working Pressure	700kg/cm ²
Quick Closure Clamp	
Separator	20ℓ x 1 unit
HP Pump	10 HP
Max. Working Pressure	330kg/cm ²
Max Flow Rate	8ℓ/min
Pre-Heater	Double Pipe Type
Condenser	Double Pipe Type
CO ₂ Reservoir	150ℓ x 1 unit

(韓国ガス安全公社の検査)

FEATURE

超臨界乾燥設備でエーロゲル製造工程に適用
 プラント設備システム全体の自動化
 高圧ガスの安全規定による許可、専門施工
 韓国ガス安全公社の検査