

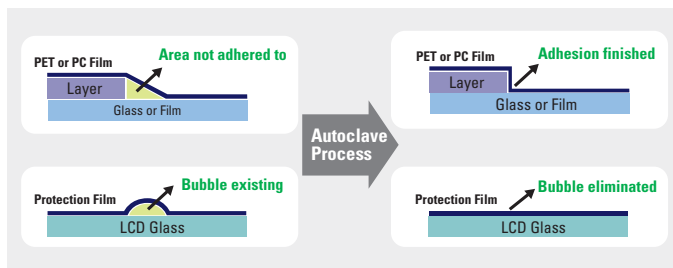
恒温加圧チャンバー

Touch Panel および小型LCD接合用 AutoclaveはElectronic産業の部分の発達で多様な製品に適用されます。

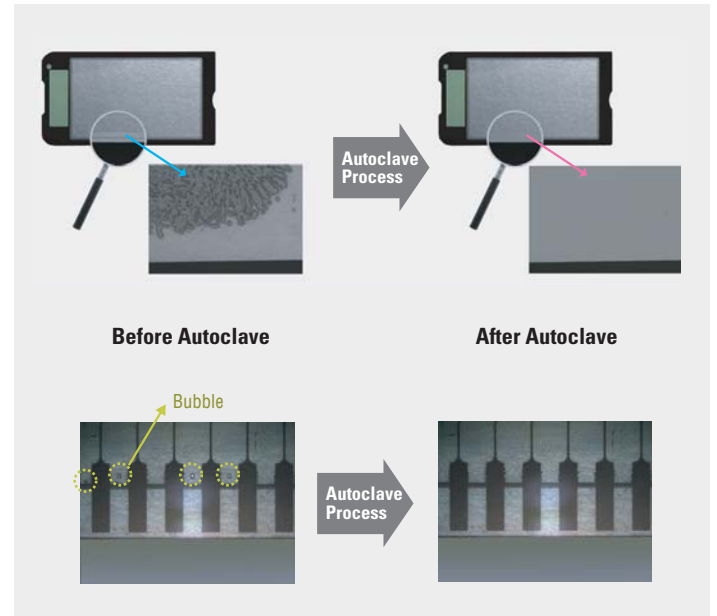
Touch Panelと携帯電話液晶などと同じフィルム接合の部分は何枚のFilm接合を必要とする重要な工程の中の一つのFilm層間の 気泡を除去することによって品質を向上させることができます。

温度と圧力外に真空/冷却方式を適用して気泡除去および圧搾力を向上させることができます。

Principle



Result



Features

- 優れた温度均一性と再現性
- 製品の熱処理および応力除去による製品の均質化
- 一方向圧縮のPress方式でない背中方向恒温圧縮方式
- 隅の部分接着強化 ALC 内部微細起泡除去
→ Panel接着力, 強度増加および視認性向上
- セッティング圧力と温度の正確な偏差
(圧力: $\pm 0.3 \text{ kg/cm}^2$ 温度: $\pm 3^\circ\text{C}$)

Application



モニター液晶, 携帯電話液晶, 計算機液晶, ナビゲーション液晶などフィルム, Glassフィルム接合



Specification

FA series	HA series	PA series	GA series	CA series
				
Vessel				
<ul style="list-style-type: none"> - Material: SUS304 & SCM - Max. Working : 0.2Mpa@200℃ - Working Zone : I.D : 300~1200 mm - Seal Type : O-ring - Cover Type : Clutch door type 	<ul style="list-style-type: none"> - Material : SUS304 & SCM - Max. Working : 0.2Mpa@200℃ - Working Zone : I.D : 440~760 mm - Seal Type : O-ring - Cover Type : Clutch door type 	<ul style="list-style-type: none"> - Material : SUS304 & SCM - Max. Working : 0.2Mpa@200℃ - Working Zone : I.D : 300~760 mm - Seal Type : O-ring - Cover Type : Clutch door type 	<ul style="list-style-type: none"> - Material: SUS304 & SCM - Max. Working: 0.08Mpa@200℃ - Working Zone: I.D : 1500~3000 mm - Seal Type : O-ring - Cover Type : Clutch door type 	<ul style="list-style-type: none"> - Material : SUS304 & SCM - Max. Working : 0.6Mpa@200℃ - Working Zone : I.D : 600~650 mm - Seal Type : O-ring - Cover Type : Clutch door type
Heater				
<ul style="list-style-type: none"> - Kantal Bellows Heater - Cover Material : SUS304 - Forced Connection - 220/380VAC, 3-ph, 9kw 	<ul style="list-style-type: none"> - Kantal Bellows Heater - Cover Material : SUS304 - Forced Connection - 220/380VAC, 3-ph, 15kw 	<ul style="list-style-type: none"> - Kantal Bellows Heater - Cover Material : SUS304 - Forced Connection - 220/380VAC, 3-ph, 15kw 	<ul style="list-style-type: none"> - Kantal Bellows Heater - Cover Material : SUS304 - Forced Connection - 220/380VAC, 3-ph, 12kw 	<ul style="list-style-type: none"> - Kantal Bellows Heater - Cover Material : SUS304 - Forced Connection - 220/380VAC, 3-ph, 15kw
Fan				
<ul style="list-style-type: none"> - Moter : 220/380VAC, 3h, 60Hz - Drive Type : Magnedrive 	<ul style="list-style-type: none"> - Moter : 380VAC, 3h, 60Hz - Drive Type : Magnedrive 	<ul style="list-style-type: none"> - Moter : 380VAC, 3h, 60Hz - Drive Type : Magnedrive 	<ul style="list-style-type: none"> - Moter : 220/380VAC, 3h, 60Hz - Drive Type : Magnedrive 	<ul style="list-style-type: none"> - Moter : 220/380VAC, 3h, 60Hz - Drive Type : Magnedrive
Control				
<ul style="list-style-type: none"> - Temp : PID Control (Deviation : ±1℃) - Pressure : On/Off Control (Deviation : ±5psi) - Time : Timer 	<ul style="list-style-type: none"> - Temp : PID Control (Deviation : ±3℃) - Pressure : On/Off Control (Deviation : ±15psi) - Time : Timer 	<ul style="list-style-type: none"> - Temp : PID Control (Deviation : ±3℃) - Pressure : On/Off Control (Deviation : ±15psi) - Time : Timer 	<ul style="list-style-type: none"> - Temp : PID Control (Deviation : ±1℃) - Pressure : On/Off Control (Deviation : ±5psi) - Time : Timer 	<ul style="list-style-type: none"> - Temp : PID Control (Deviation : ±1℃) - Pressure : On/Off Control (Deviation : ±5psi) - Time : Timer
Cooling				
<ul style="list-style-type: none"> - Industrial Water or Chiller 	<ul style="list-style-type: none"> - Industrial Water or Chiller - Use of Below 60℃ 	<ul style="list-style-type: none"> - Industrial Water or Chiller - Use of Below 60℃ 	<ul style="list-style-type: none"> - Industrial Water or Chiller - Use of Below 60℃ 	<ul style="list-style-type: none"> - Industrial Water or Chiller - Use of Below 60℃
Vacuum				
<ul style="list-style-type: none"> - N/A 	<ul style="list-style-type: none"> - N/A 	<ul style="list-style-type: none"> - Rotary Vane Pump - 1 x 10⁻² torr 	<ul style="list-style-type: none"> - N/A 	<ul style="list-style-type: none"> - N/A
Option				
<ul style="list-style-type: none"> - Touch Screen - Recorder - PC & Controller 	<ul style="list-style-type: none"> - Touch Screen - Recorder - PC & Controller 	<ul style="list-style-type: none"> - Touch Screen - Recorder - PC & Controller 	<ul style="list-style-type: none"> - Touch Screen - Recorder - PC & Controller 	<ul style="list-style-type: none"> - Touch Screen - Recorder - PC & Controller

* 顧客の要求によって変更可能です